

Replacement of 3400 Cooling Module p/n 572507

(Please see attached drawings of the PCA unit to locate the Cooling Modules)

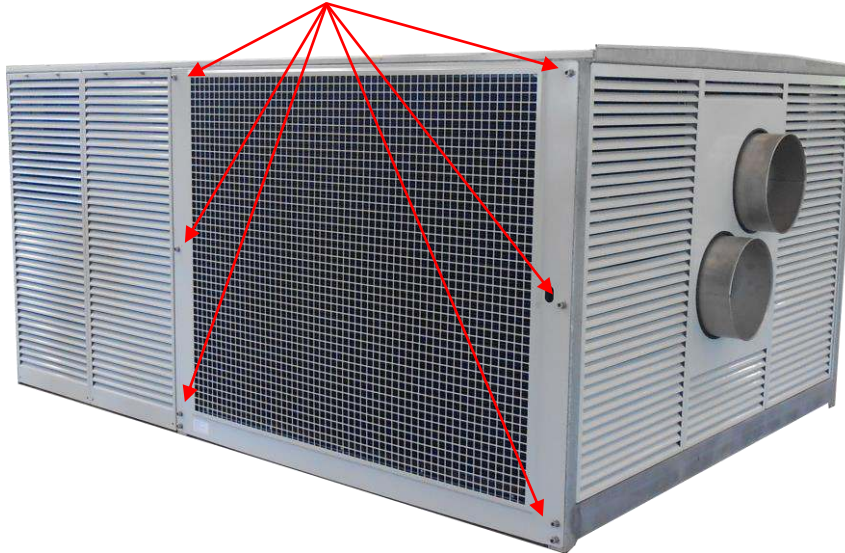
- 1 Switch off the PCA unit and wait 5 minutes before you start replacing the cooling module.



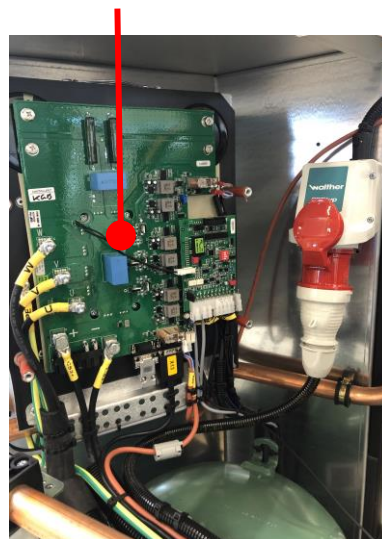
Warning!

Capacitors remain charged to dangerous voltages.
Discharge time: 5 minutes

- 2 Remove the screws holding the cover. Retain the screws for reinstallation. Remove the cover.



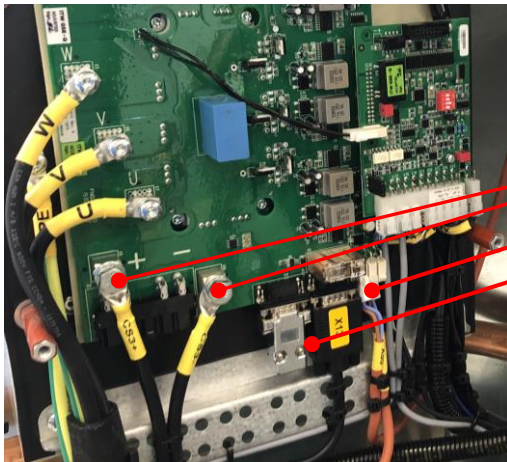
- 3 Pull out the cooling module. This can be done by hand (two persons needed). Remove the cover of the Variable Frequency Drive (VFD). Note: On the photo below the cover has already been removed.



- 4 Secure the Cooling Module tray in both sides, inserting a tool or bolt, as shown on the photos below.



- 5 Disconnect the cables marked with red arrows. Retain nuts and washers for reinstallation.



1. Remove the cable binders

2. Disconnect VFD cables:
X9-X10 (DC bus)
X56-X57 (Power Supply)
X12-X13 (CAN bus)

3. Disconnect cables:
Earth connection (PE)
Condenser Fans (CEE-plug)



- 6 Remove the cooling module using a forklift. For bridge-mounted units, this is easiest done with the bridge in levelled position. It is recommended to have a person giving directions for the forklift operator, as shown on the below photo.



NOTICE: Limited lifting height!

Be aware of the limited lifting height, see also below photo, shown from the top right side of the evaporator holder.

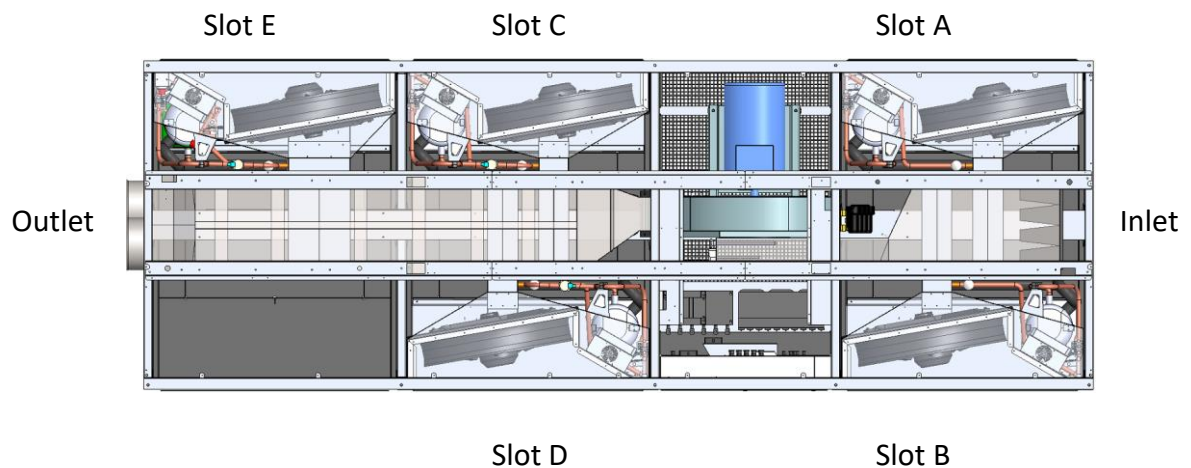
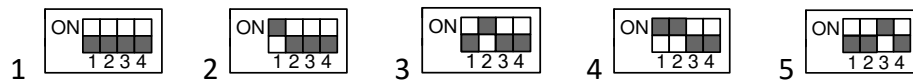


- 7 Use the above procedure in reverse order, for re-installation of a cooling module.

Set the VFD dipswitch according to the Cooling Module numbering. See below for slot locations.

Slot No.:	2x Cooling Modules	3x Cooling Modules	4x Cooling Modules	5x Cooling Modules
Slot A	-	Empty	1	1
Slot B	-	1	2	2
Slot C	1	2	3	3
Slot D	2	3	4	4
Slot E	-	-	-	5

Dip-switch settings for cooling modules:



- 8 After installing/connecting the module and all covers are back in place, the PCA can be switched on. The unit is now ready for operation.